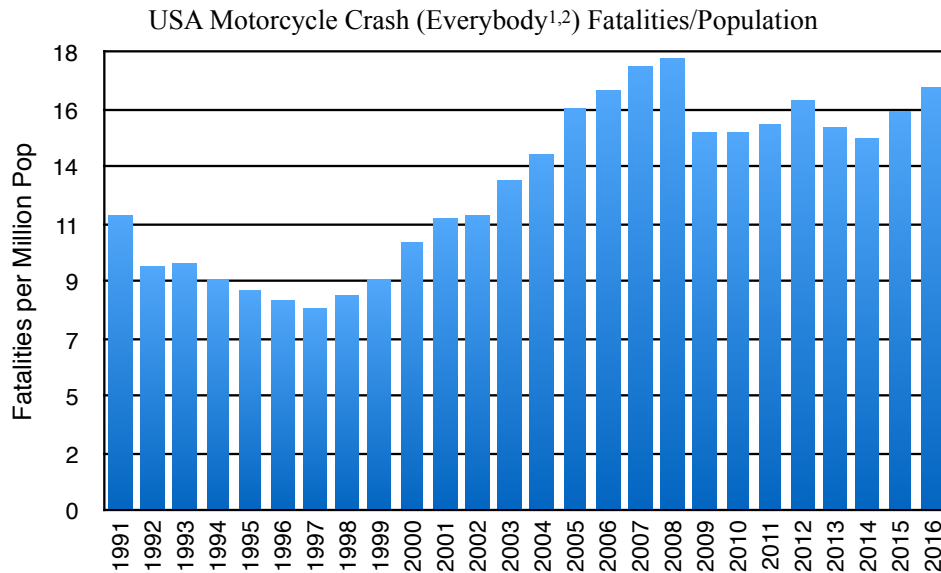
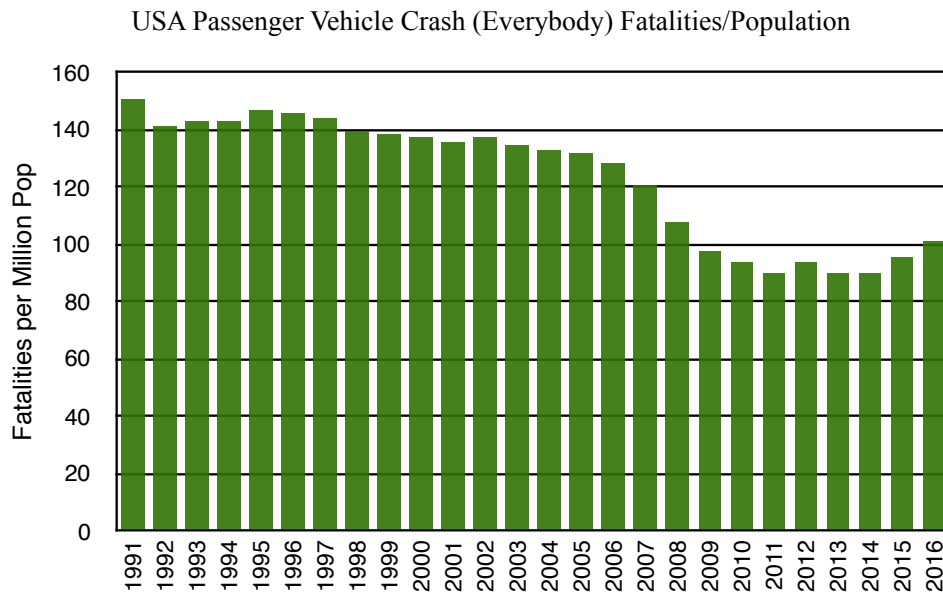


USA

Historical Motorcycle and Passenger Vehicle Crash Fatalities per Population



Motorcycle
Societal Danger



Passenger Vehicle
Societal Danger

Source: Queries of NHTSA Fatality Analysis Reporting System (FARS)
FARS File Release October 2017, and US Census Bureau.

1. Motorcyclists are drivers and passengers, i.e. the occupants, riding on Motorcycles-In-Transport.
2. A motorcycle crash is any crash that involves one or more motorcycles. Motorcycle crash fatalities include everybody fatally injured, whether riding on the motorcycle-in-transport or not. However, about 90% of the fatalities in motorcycle crashes are the motorcycle drivers. Other examples of fatalities are pedestrians, people riding in cars, and bicyclists receiving fatal injuries during the motorcycle crash.